

#### NOTES:

1) FOR OPTIMAL REINFORCEMENT PLACEMENT IN THE NUDURA FORM, SPACING OF HORIZONTAL REINFORCEMENT TO BE SPECIFIED AT 18" (457mm) O.C. AND VERTICAL REINFORCEMENT TO BE SPECIFIED AT MULTIPLES OF 8" (203mm) O.C. REFER TO NUDURA REINFORCEMENT PLACEMENT DETAILS.

*This detail is for general informational purposes, only. The project design professional determines, in its sole discretion, whether this detail or a functionally equivalent detail is best suited for the project with respect to any architecture, engineering, and design requirements, including any local building code requirements. If this document is not reviewed and the product is not approved for use by a licensed design professional, the customer agrees that the detail may contain substantive flaws requiring correction, and hereby releases Tremco CPG Inc. from any and all liability related to the design and installation of the product. This detail is subject to change without notice. Contact Tremco to ensure you have the most recent version.*

#### Below Grade Construction



Nudura Technical Support: 866-468-6299  
International: +1 705-726-9499

Detail: Nudura 6" (152mm) Form Unit, Strip Footing Detail with Non-Insulated Slab

Drawn by: JN

Checked by: KS

Scale: 1:8

Revision #: 04

Revised by: KAB

Date: 3/13/2024

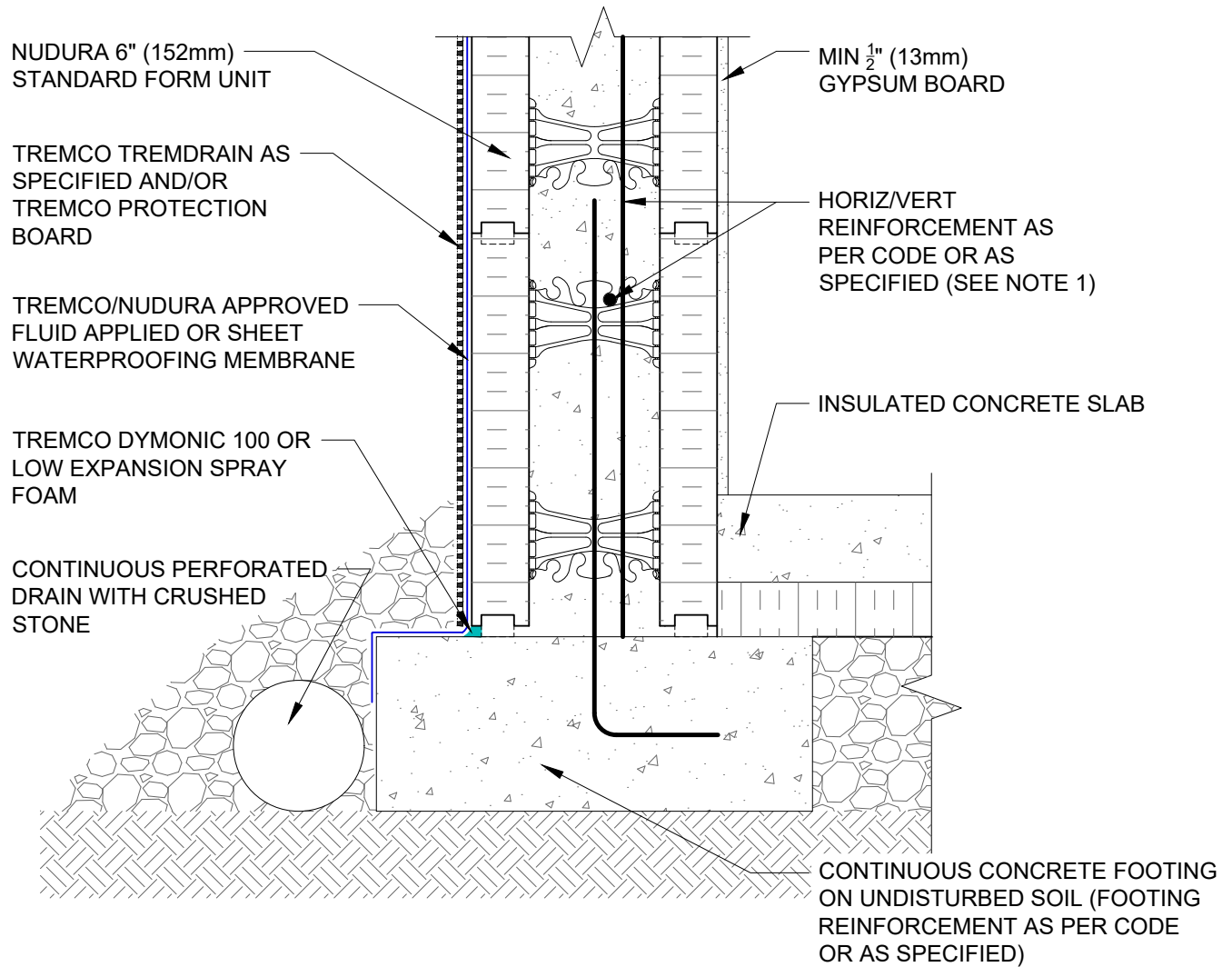
File Name:

B6A01



Construction Products Group

[www.tremcocpg.com](http://www.tremcocpg.com)



#### NOTES:

1) FOR OPTIMAL REINFORCEMENT PLACEMENT IN THE NUDURA FORM, SPACING OF HORIZONTAL REINFORCEMENT TO BE SPECIFIED AT 18" (457mm) O.C. AND VERTICAL REINFORCEMENT TO BE SPECIFIED AT MULTIPLES OF 8" (203mm) O.C. REFER TO NUDURA REINFORCEMENT PLACEMENT DETAILS.

*This detail is for general informational purposes only. The project design professional determines, in its sole discretion, whether this detail or a functionally equivalent detail is best suited for the project with respect to any architecture, engineering, and design requirements, including any local building code requirements. If this document is not reviewed and the product is not approved for use by a licensed design professional, the customer agrees that the detail may contain substantive flaws requiring correction, and hereby releases Tremco CPG Inc. from any and all liability related to the design and installation of the product. This detail is subject to change without notice. Contact Tremco to ensure you have the most recent version.*

#### Below Grade Construction



Nudura Technical Support: 866-468-6299  
International: +1 705-726-9499

Detail: Nudura 6" (152mm) Form Unit, Strip Footing Detail with Insulated Slab

Drawn by: JN

Checked by: KS

Scale: 1:8

Revision #: 04

Revised by: KAB

Date: 3/13/2024

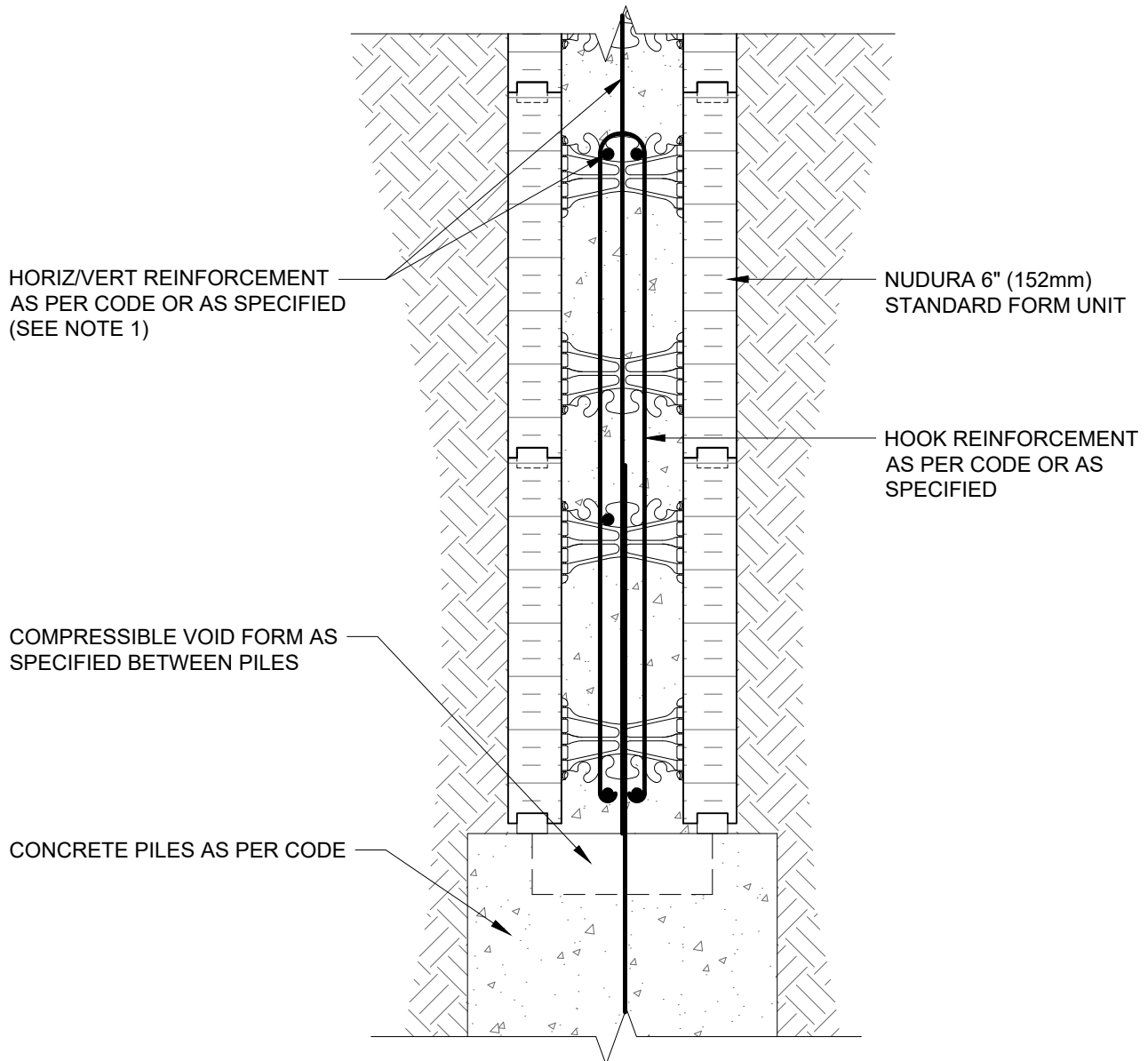
[www.tremcocpg.com](http://www.tremcocpg.com)

File Name:

B6A02



Construction Products Group



#### NOTES:

1) FOR OPTIMAL REINFORCEMENT PLACEMENT IN THE NUDURA FORM, SPACING OF HORIZONTAL REINFORCEMENT TO BE SPECIFIED AT 18" (457mm) O.C. AND VERTICAL REINFORCEMENT TO BE SPECIFIED AT MULTIPLES OF 8" (203mm) O.C. REFER TO NUDURA REINFORCEMENT PLACEMENT DETAILS.

*This detail is for general informational purposes only. The project design professional determines, in its sole discretion, whether this detail or a functionally equivalent detail is best suited for the project with respect to any architecture, engineering, and design requirements, including any local building code requirements. If this document is not reviewed and the product is not approved for use by a licensed design professional, the customer agrees that the detail may contain substantive flaws requiring correction, and hereby releases Tremco CPG Inc. from any and all liability related to the design and installation of the product. This detail is subject to change without notice. Contact Tremco to ensure you have the most recent version.*

#### Below Grade Construction



Nudura Technical Support: 866-468-6299  
International: +1 705-726-9499

Detail: Nudura 6" (152mm) Form Unit, Stem Wall on Piles

Drawn by: JN

Checked by: KS

Scale: 1:8

Revision #: 04

Revised by: KAB

Date: 3/13/2024

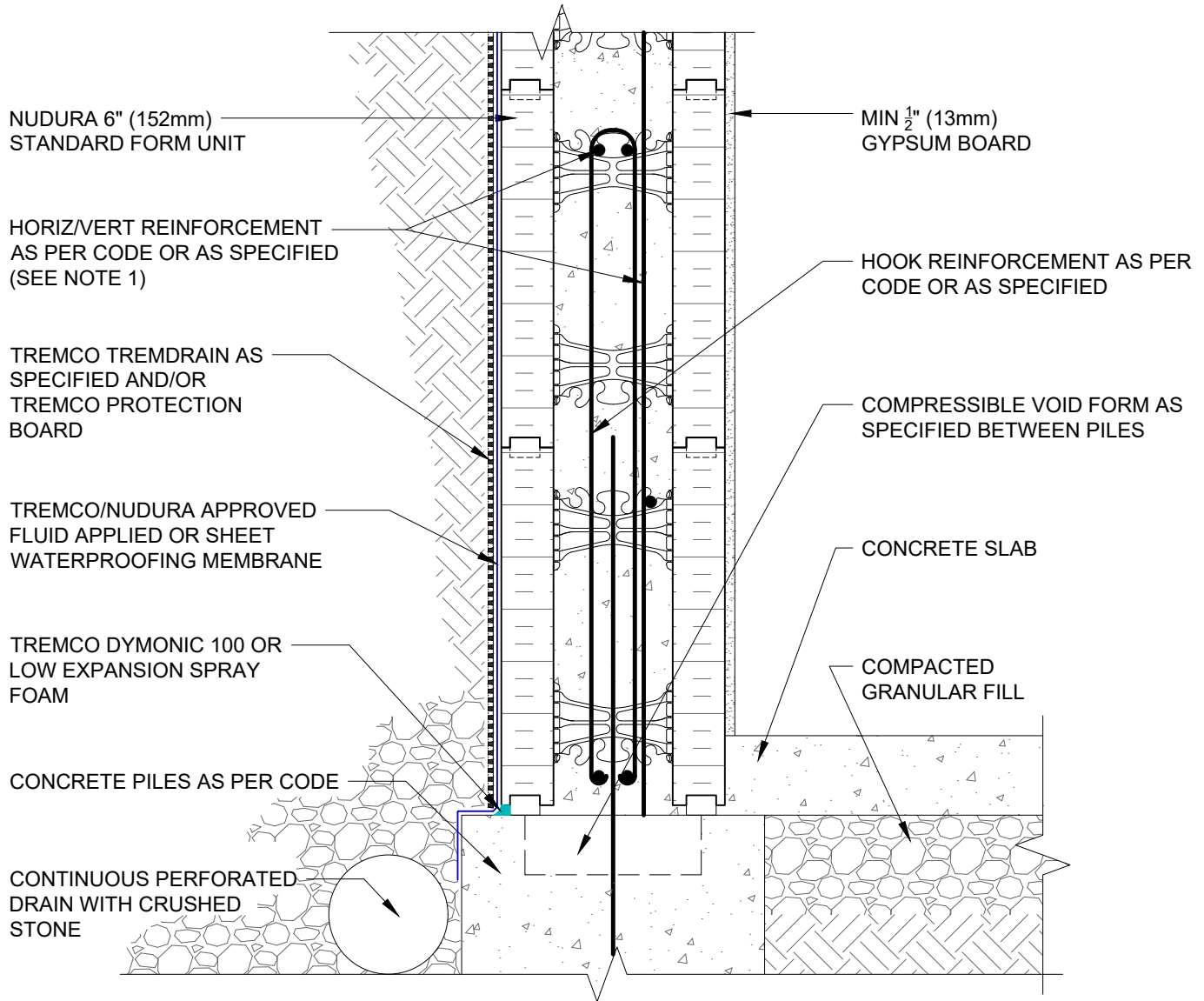
File Name:

B6C06



Construction Products Group

[www.tremcocpg.com](http://www.tremcocpg.com)

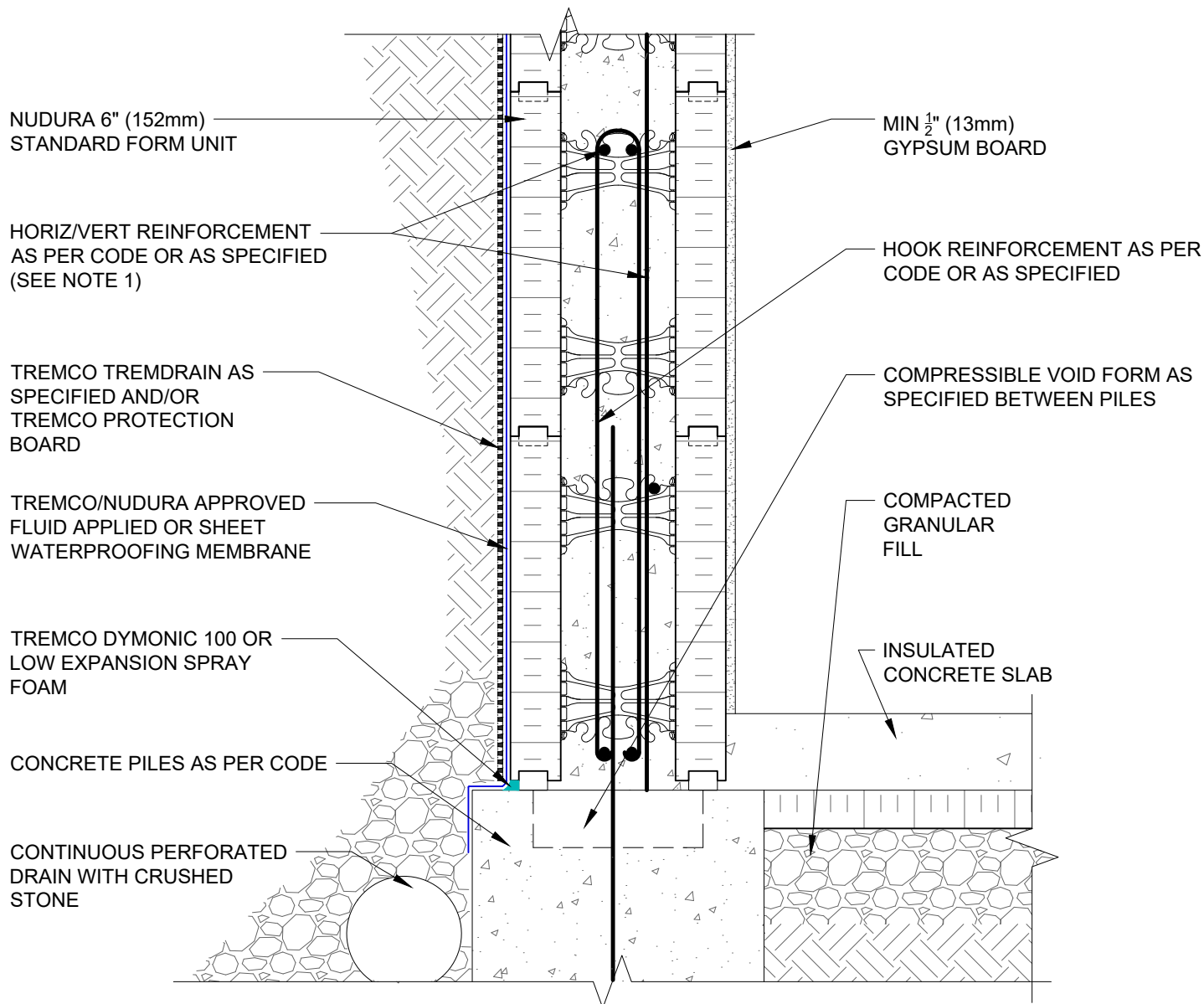


#### NOTES:

1) FOR OPTIMAL REINFORCEMENT PLACEMENT IN THE NUDURA FORM, SPACING OF HORIZONTAL REINFORCEMENT TO BE SPECIFIED AT 18" (457mm) O.C. AND VERTICAL REINFORCEMENT TO BE SPECIFIED AT MULTIPLES OF 8" (203mm) O.C. REFER TO NUDURA REINFORCEMENT PLACEMENT DETAILS.

*This detail is for general informational purposes, only. The project design professional determines, in its sole discretion, whether this detail or a functionally equivalent detail is best suited for the project with respect to any architecture, engineering, and design requirements, including any local building code requirements. If this document is not reviewed and the product is not approved for use by a licensed design professional, the customer agrees that the detail may contain substantive flaws requiring correction, and hereby releases Tremco CPG Inc. from any and all liability related to the design and installation of the product. This detail is subject to change without notice. Contact Tremco to ensure you have the most recent version.*

#### Below Grade Construction



#### NOTES:

1) FOR OPTIMAL REINFORCEMENT PLACEMENT IN THE NUDURA FORM, SPACING OF HORIZONTAL REINFORCEMENT TO BE SPECIFIED AT 18" (457mm) O.C. AND VERTICAL REINFORCEMENT TO BE SPECIFIED AT MULTIPLES OF 8" (203mm) O.C. REFER TO NUDURA REINFORCEMENT PLACEMENT DETAILS.

*This detail is for general informational purposes only. The project design professional determines, in its sole discretion, whether this detail or a functionally equivalent detail is best suited for the project with respect to any architecture, engineering, and design requirements, including any local building code requirements. If this document is not reviewed and the product is not approved for use by a licensed design professional, the customer agrees that the detail may contain substantive flaws requiring correction, and hereby releases Tremco CPG Inc. from any and all liability related to the design and installation of the product. This detail is subject to change without notice. Contact Tremco to ensure you have the most recent version.*

#### Below Grade Construction



Nudura Technical Support: 866-468-6299  
International: +1 705-726-9499

Detail: Nudura 6" (152mm) Form Unit, Stem Wall on Piles with Insulated Concrete Slab, Below Grade

Drawn by: TVC

Checked by: KS

Scale: 1:8

Revision #: 04

Revised by: KAB

Date: 3/13/2024

File Name:

B6C09



Construction Products Group

[www.tremcocpg.com](http://www.tremcocpg.com)

NUDURA 6" (152mm)  
STANDARD FORM UNIT

TREMCO EXOAIR 230 OR  
FUNCTIONAL EQUIVALENT

EXTERIOR FINISH AS  
SPECIFIED

HORIZ/VERT REINFORCEMENT  
AS PER CODE OR AS  
SPECIFIED (SEE NOTE 1)

HAUNCHED SLAB  
REINFORCEMENT  
AS PER CODE OR  
AS SPECIFIED

INSULATION AS SPECIFIED

TREMCO/NUDURA  
APPROVED PARGE  
COAT

INSTALL SLOPED INSULATION  
TO SUIT FROST PENETRATION  
DEPTH AS SPECIFIED BY  
LOCAL CODES

MIN  $\frac{1}{2}$ " (13mm) GYPSUM BOARD

STEEL DOWELS INSTALLED  
AS PER CODE OR AS  
SPECIFIED

SEAL NUDURA FORMS TO SLAB  
WITH LOW EXPANSION SPRAY  
FOAM OR TREMCO DYMONIC 100

INSULATED SLAB ON GRADE

COMPACTED  
GRANULAR FILL

#### NOTES:

1) FOR OPTIMAL REINFORCEMENT PLACEMENT IN THE NUDURA FORM, SPACING OF HORIZONTAL REINFORCEMENT TO BE SPECIFIED AT 18" (457mm) O.C. AND VERTICAL REINFORCEMENT TO BE SPECIFIED AT MULTIPLES OF 8" (203mm) O.C. REFER TO NUDURA REINFORCEMENT PLACEMENT DETAILS.

*This detail is for general informational purposes only. The project design professional determines, in its sole discretion, whether this detail or a functionally equivalent detail is best suited for the project with respect to any architecture, engineering, and design requirements, including any local building code requirements. If this document is not reviewed and the product is not approved for use by a licensed design professional, the customer agrees that the detail may contain substantive flaws requiring correction, and hereby releases Tremco CPG Inc. from any and all liability related to the design and installation of the product. This detail is subject to change without notice. Contact Tremco to ensure you have the most recent version.*

#### Below Grade Construction



Nudura Technical Support: 866-468-6299  
International: +1 705-726-9499

Detail: Nudura 6" (152mm) Form Unit, Haunched Slab Detail, Exterior Finish  
as Specified, Insulated

Drawn by: TVC

Checked by: KS

Scale: 1:8

Revision #: 04

Revised by: KAB

Date: 3/13/2024

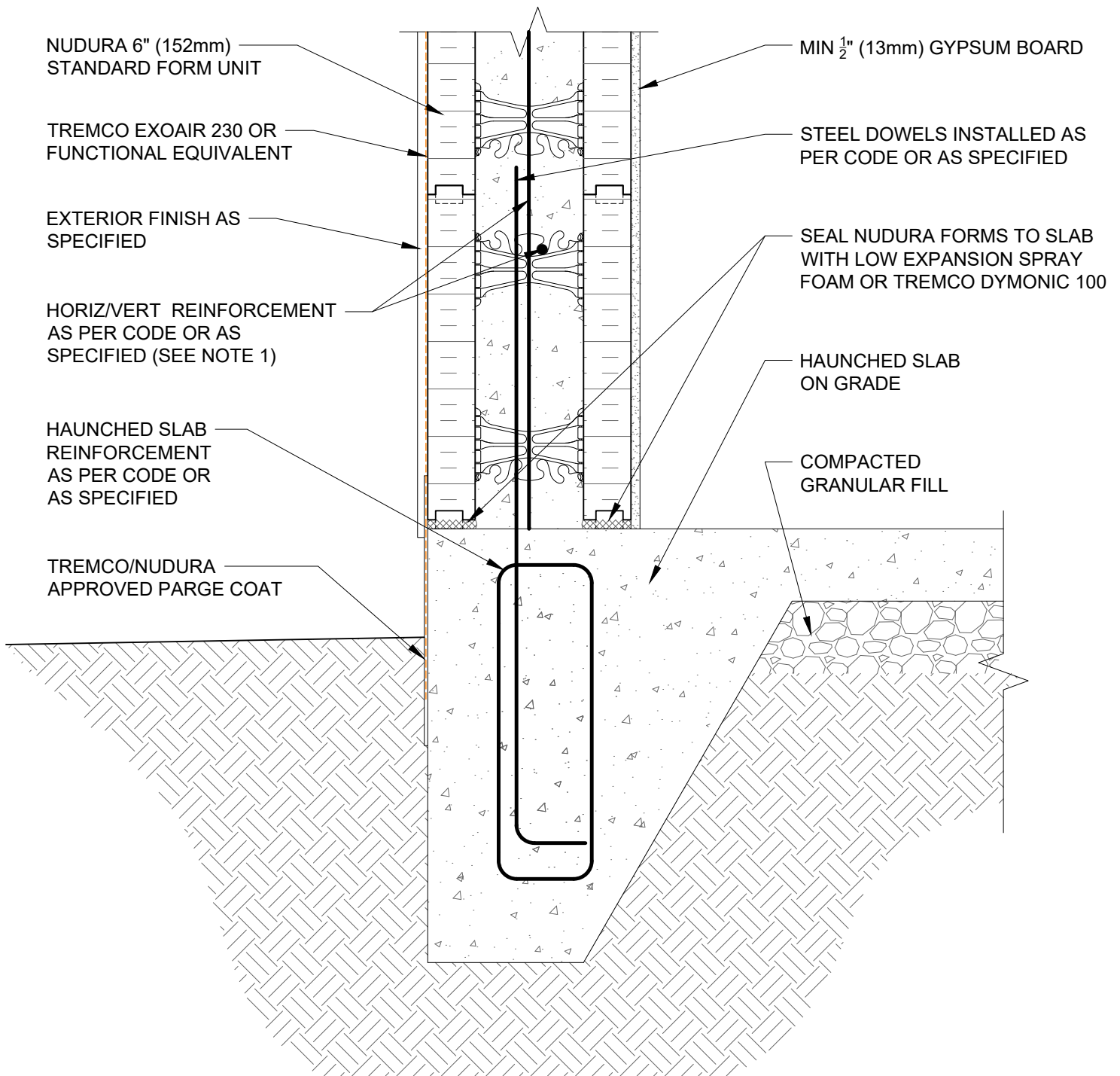
File Name:

B6D01



Construction Products Group

[www.tremcocpg.com](http://www.tremcocpg.com)



NOTES:  
 1) FOR OPTIMAL REINFORCEMENT PLACEMENT IN THE NUDURA FORM, SPACING OF HORIZONTAL REINFORCEMENT TO BE SPECIFIED AT 18" (457mm) O.C. AND VERTICAL REINFORCEMENT TO BE SPECIFIED AT MULTIPLES OF 8" (203mm) O.C. REFER TO NUDURA REINFORCEMENT PLACEMENT DETAILS.

*This detail is for general informational purposes only. The project design professional determines, in its sole discretion, whether this detail or a functionally equivalent detail is best suited for the project with respect to any architecture, engineering, and design requirements, including any local building code requirements. If this document is not reviewed and the product is not approved for use by a licensed design professional, the customer agrees that the detail may contain substantive flaws requiring correction, and hereby releases Tremco CPG Inc. from any and all liability related to the design and installation of the product. This detail is subject to change without notice. Contact Tremco to ensure you have the most recent version.*

#### Below Grade Construction

Detail: Nudura 6" (152mm) Form Unit, Haunched Slab Detail, Exterior Finish as Specified, Non-Insulated

Drawn by: TVC

Checked by: KS

Scale: 1:8

Revision #: 04

Revised by: KAB

Date: 3/13/2024

File Name:

B6D02



Nudura Technical Support: 866-468-6299  
 International: +1 705-726-9499

[www.tremcocpg.com](http://www.tremcocpg.com)

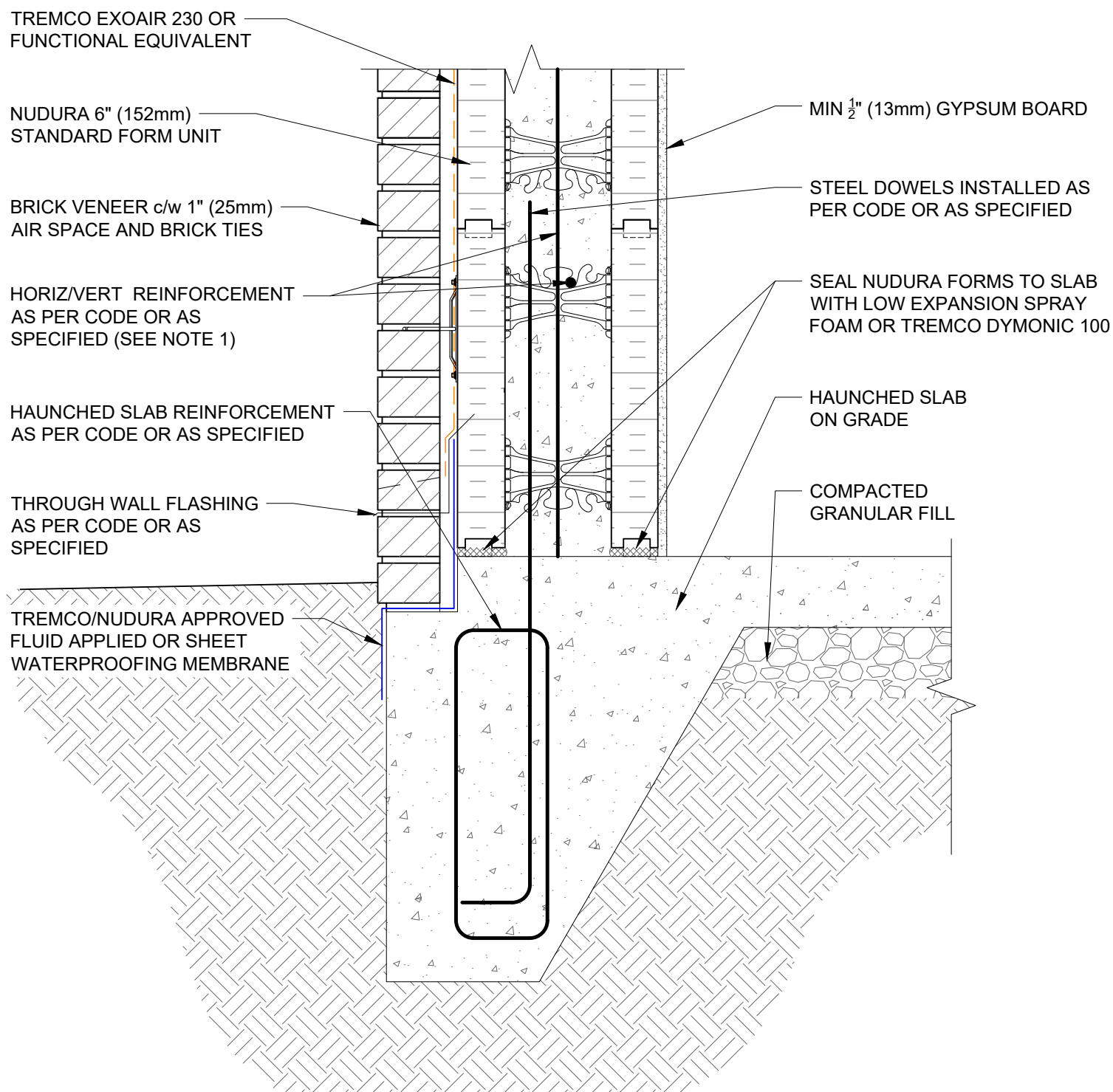


Construction Products Group









NOTES:  
 1) FOR OPTIMAL REINFORCEMENT PLACEMENT IN THE NUDURA FORM, SPACING OF HORIZONTAL REINFORCEMENT TO BE SPECIFIED AT 18" (457mm) O.C. AND VERTICAL REINFORCEMENT TO BE SPECIFIED AT MULTIPLES OF 8" (203mm) O.C. REFER TO NUDURA REINFORCEMENT PLACEMENT DETAILS.

*This detail is for general informational purposes only. The project design professional determines, in its sole discretion, whether this detail or a functionally equivalent detail is best suited for the project with respect to any architecture, engineering, and design requirements, including any local building code requirements. If this document is not reviewed and the product is not approved for use by a licensed design professional, the customer agrees that the detail may contain substantive flaws requiring correction, and hereby releases Tremco CPG Inc. from any and all liability related to the design and installation of the product. This detail is subject to change without notice. Contact Tremco to ensure you have the most recent version.*

#### Below Grade Construction

Detail: Nudura 6" (152mm) Form Unit, Haunched Slab Detail, Brick Veneer Finish, Non-Insulated

File Name:

Drawn by: TVC

Checked by: KS

Scale: 1:8

B6D04

Revision #: 02

Revised by: KAB

Date: 3/13/2024



Nudura Technical Support: 866-468-6299  
 International: +1 705-726-9499

[www.tremcocpg.com](http://www.tremcocpg.com)



Construction Products Group